

Product information presented here reflects conditions at time of publication. Consult factory regarding discrepancies or inconsistencies.

**PUMP COMPANY**

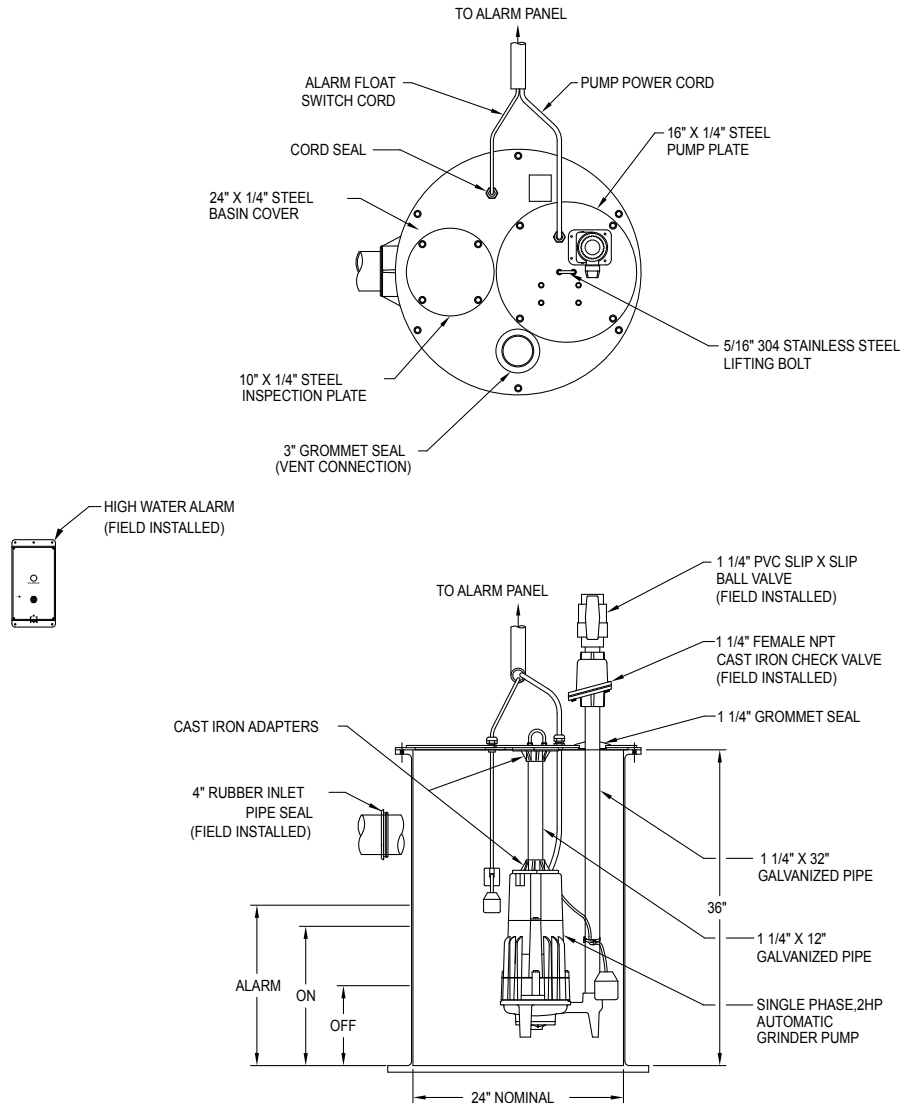
Zoeller Family of Water Solutions™

MAIL TO: P.O. BOX 16347 • Louisville, KY 40256-0347  
 SHIP TO: 3649 Cane Run Road • Louisville, KY 40211-1961  
 (502) 778-2731 • 1 (800) 928-PUMP • FAX (502) 774-3624

visit our web site:  
[www.zoeller.com](http://www.zoeller.com)

# SIMPLEX 820 GRINDER SYSTEM

## P/N 922-0009 INDOOR PREPACKAGED



SK1691

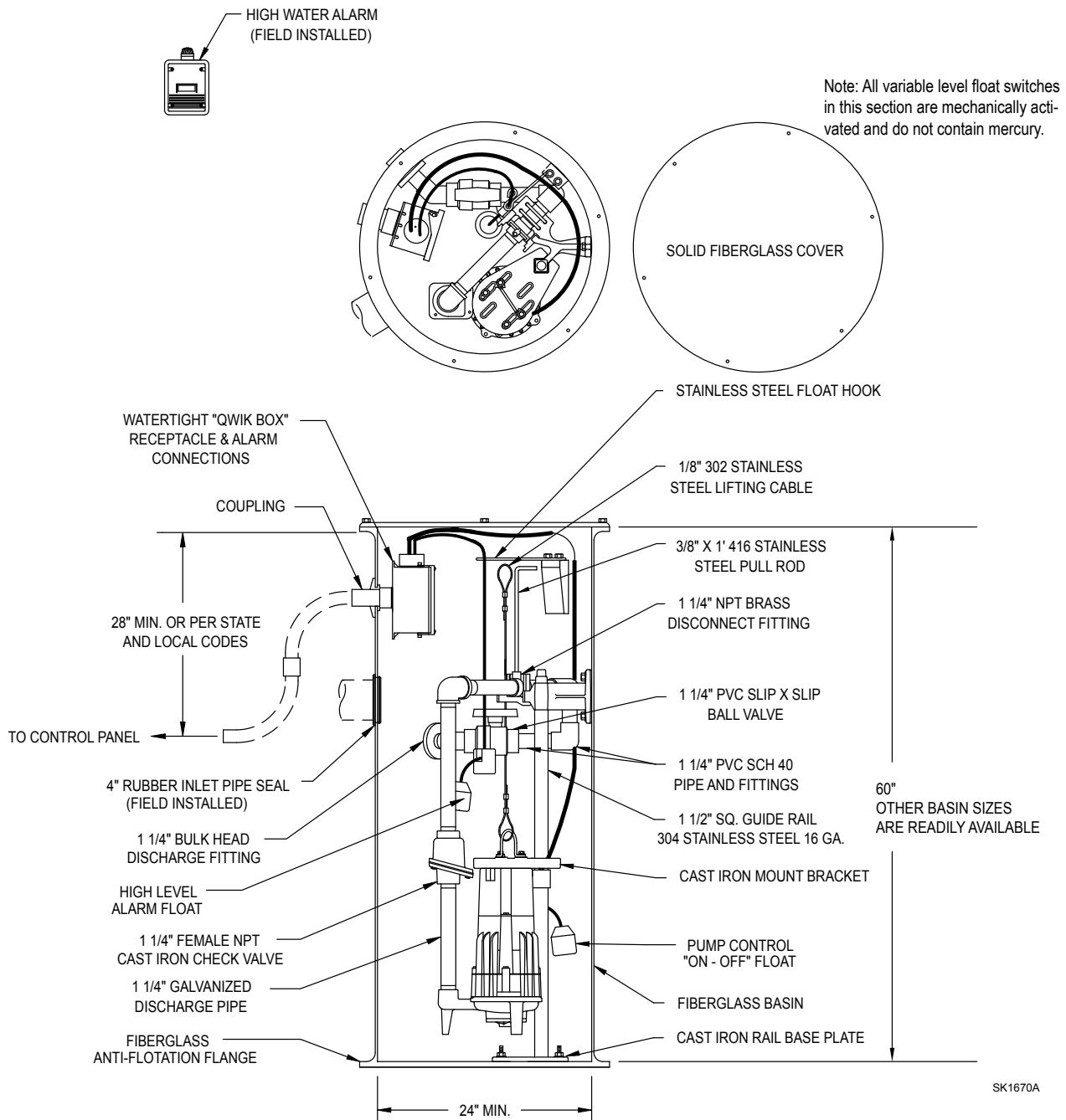
### Complete System As Shown Above (P/N 922-0009) Includes:

Qty.	Part No.	Description
1	820-0011	230 Volt, 1 Ph, 2 HP Automatic 820 Grinder Pump
1	10-4012	Indoor Alarm
1	10-0689	Weight Assembly
1	32-0011	Basin Assembly - 24" X 36"

Approximate Weight: 184 lbs.

# P/N 922-0005 OUTDOOR GRINDER SYSTEM

## 820 SIMPLEX PACKAGE WITH SQUARE GUIDE RAIL SYSTEM



### Complete System As Shown Above (P/N 922-0005) Includes:

Qty.	Part No.	Description
1	820-0011	230 Volt, 1 Ph, 2 HP Automatic 820 Grinder Pump
1	10-0623	Indoor/Outdoor Alarm
1	10-0580	Qwik Box Connection
1	10-0661	Weight & Bracket Assembly
1	33-0186	24" X 60" Fiberglass Basin and Cover, Rail System, 8' SS Lifting Cable and 1' Pull Rod

Approximate Weight: 316 lbs.