

Product information presented here reflects conditions at time of publication. Consult factory regarding discrepancies or inconsistencies.



MAIL TO: P.O. BOX 16347 • Louisville, KY 40256-0347  
 SHIP TO: 3649 Cane Run Road • Louisville, KY 40211-1961  
 TEL: (502) 778-2731 • 1 (800) 928-PUMP • FAX: (502) 774-3624

Visit our web site:  
[zoellerpumps.com](http://zoellerpumps.com)

## SWITCH-MATE PIGGYBACK VARIABLE LEVEL FLOAT SWITCH (VLFS)

- Converts nonautomatic pump to automatic pump.
- Simple installation.
- Adjustable/Variable level.
- Standard 15' and 20' SJOW CPE cord with molded plug. 10-0055 and 10-0065 - 10' cord standard.
- Float is constructed of durable PVC/polypropylene encasing variable level switch.
- Standard - normally open (NO) ("pumps down").
- Optional - Normally closed available (NC) ("pumps up"). Consult Factory.
- Maximum operating temperature for 10-0748 - 120°F (49°C). All other switches - 140°F (60°C).
- Float is omnidirectional (no "UP" side).
- Includes mounting clamp.
- Designed for EFFLUENT, SEWAGE and DEWATERING applications.
- Variable level float switch, for use in 18" minimum diameter basins.
- 10-0748 - 25' cord standard, no molded plug. Can be used as a control switch to operate an external magnetic or combination starter on three phase pumps.
- Vertical piggyback float switch. Ideal for narrow diameter basins. 6½" maximum cycle range.
- Use recommendation chart for switch selection.

### SINGLE PIGGYBACK VARIABLE LEVEL FLOAT SWITCH

#### 13 Amp Maximum

##### Normally Open (NO)

- 10-0055 - 115V - 10'
- 10-0034 - 115V - 15'
- 10-0035 - 230V - 15'
- 10-0063 - 115V - 20'
- 10-0706 - 230V - 20'

##### Normally Closed (NC)

- 10-0065 - 115V - 10'
- 10-0037 - 115V - 15'
- 10-0062 - 230V - 15'

#### 15 Amp Maximum

##### Normally Open (NO)

- 10-0032 - 115V - 15'
- 10-0033 - 230V - 15'
- 10-0705 - 115V - 20'
- 10-0559 - 230V - 20'

##### Normally Closed (NC)

- 10-0064 - 115V - 15'

#### 20 Amp Maximum

##### Normally Open (NO)

- 10-0748 - 115V/230V - 25'



Canadian Standards Association approval available.



Note: All variable level float switches in this section are mechanically activated and do not contain mercury.

### SINGLE PIGGYBACK VERTICAL FLOAT SWITCH



#### 13 Amp Maximum Normally Open (NO) Vertical

- 10-2041 - 115V - 10'
- 10-2042 - 115V - 15'
- 10-2043 - 115V - 20'

### DOUBLE PIGGYBACK VARIABLE LEVEL FLOAT SWITCH

#### Mechanical

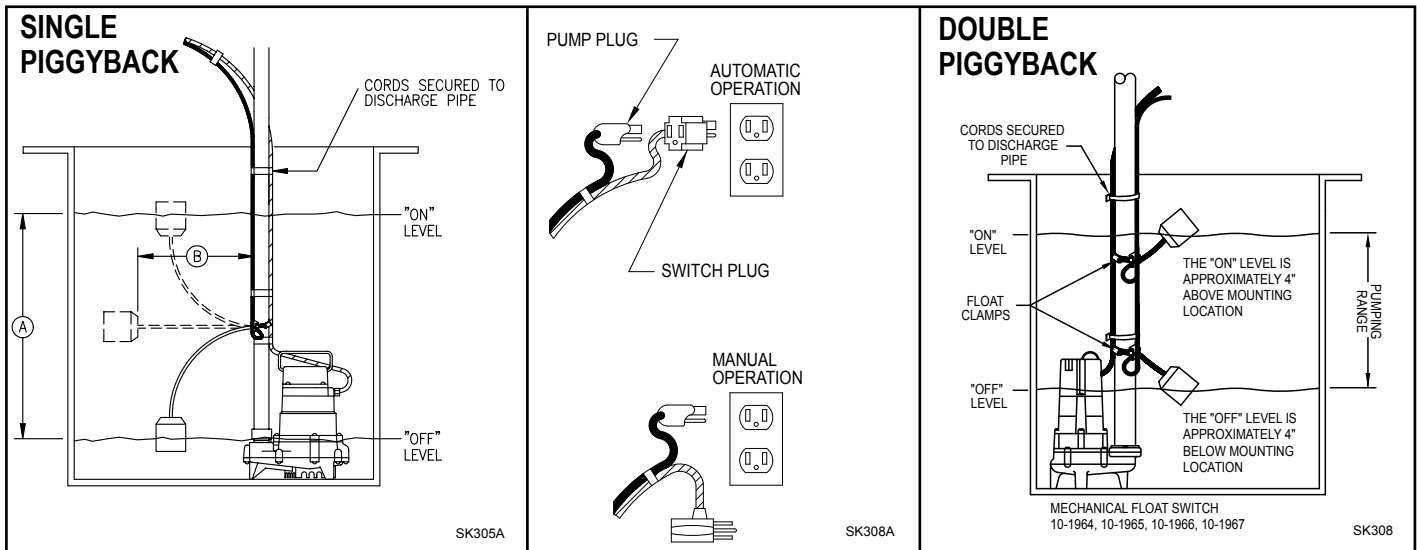
- 10-1964 - 115V - 15 Amp - 15'
- 10-1965 - 230V - 15 Amp - 15'



Canadian Standards Association approval available.



# TYPICAL INSTALLATIONS



## PIGGYBACK VARIABLE LEVEL FLOAT SWITCH RECOMMENDATIONS FOR ZOELLER COMPANY PUMPS

SWITCH MODEL NO.	SWITCH SPECIFICATIONS	PUMPING RANGE	USE WITH ZOELLER PUMP MODEL NUMBERS
10-0055	10' Cord, Single Piggyback 115V, 1 PH, 13A	6" Min. 36" Max.	"N" Models - 53, 55, 57, 59, 98, 137, 139, 140, 151, 152, 153, 264, 266, 267, 268 & 282 (See Note 2).
10-0034	15' Cord, Single Piggyback 115V, 1 PH, 13A Max.		
10-0063	20' Cord, Single Piggyback 115V, 1 PH, 13A		
10-0032	15' Cord, Single Piggyback 115V, 1 PH, 15A	6" Min. 36" Max.	"N" Models - 161, 163, 270 & 292 (See Note 2).
10-0705	20' Cord, Single Piggyback 115V, 1 PH, 15A		
10-1964	15' Cord, Double Piggyback 115V, 1 PH, 13A	3" Min. 48" Max.	"N" Models - 53, 55, 57, 59, 98, 137, 139, 140, 264, 266, 267, 268, & 282 (See Note 2).
10-0035	15' Cord, Single Piggyback 230V, 1 PH, 13A	6" Min. 36" Max.	"E" Models - 53, 55, 57, 59, 98, 137, 139, 140, 151, 152, 153, 161, 163, 165, 185, 264, 266, 267, 268, 270, 282, 284 & 293 (See Note 2). "I" Models - 137, 139, 161, 163, 165, 185, 266, 267, 268, 282, 284, 293 (See Note 2).
10-0706	20' Cord, Single Piggyback 230V, 1 PH, 13A		
10-0033	15' Cord, Single Piggyback 230V, 1 PH, 15A	6" Min. 36" Max.	"E" Models - 186, 188, 294, 404 & 820 (See Note 2). "I" Model - 404.
10-0559	20' Cord, Single Piggyback 230V, 1 PH, 15A		
10-1965	15' Cord, Double Piggyback 230V, 1 PH, 13A	3" Min. 48" Max.	"E" Models - 53, 55, 57, 59, 98, 137, 139, 140, 161, 163, 165, 185, 264, 266, 267, 268, 270, 282, 284 & 293 (See Note 2). "I" Models - 137, 139, 161, 163, 165, 185, 266, 267, 268, 282, 284 & 293 (See Note 2).
10-0748	25' Cord, Wired in Pump Switch 115V or 230V, 1 PH, 20A (See Note 3).	9" Min. 24" Max.	"E" Models - 189, 295 & 405 (See Note 2). "I" Models - 188, 189, 294, 295, 405 & 820 (See Note 2).

### Notes:

- "I" models - 188, 189, 294, 295, 405 use the single piggyback type only with a 10-0125 Simplex Pump Control Box.
- Remove plug if present and use with "Junction Box" 10-0002 when field wiring is required.
- Maximum operating temperature for 10-0748 - 120°F (49°C); all other switches - 140°F (60°C).
- For Duplex Systems, use with appropriate panel (See FM0712). For Simplex Systems, use with appropriate panel (See FM1228).

### CAUTION

All installation of controls, protection devices and wiring should be done by a qualified licensed electrician. All electrical and safety codes should be followed including the most recent National Electrical Code (NEC) and the Occupational Safety and Health Act (OSHA).